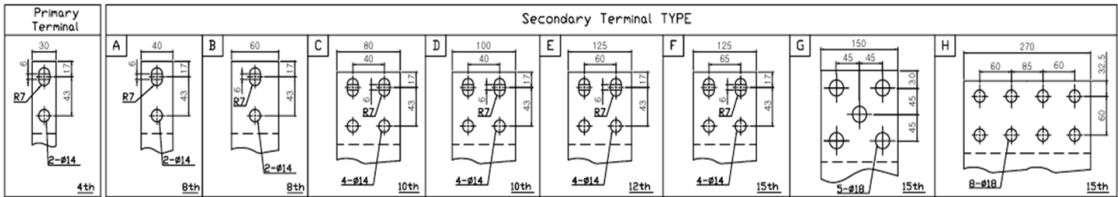
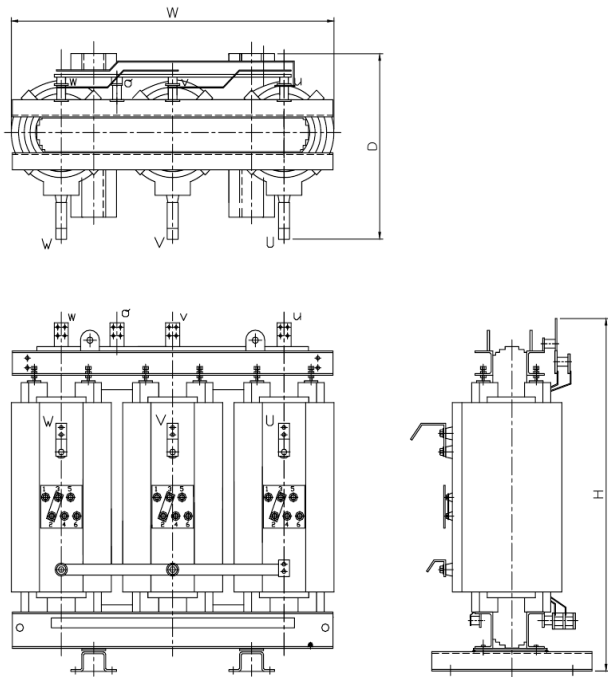


SPECIFICATION (SM-SAA)
(For solar power, stable winding)



3P 22.9kV/380V, YNyn0(d1)

Capacity	% IZ	Efficiency (Load Rate)		No load current	Voltage fluctuation rate	External dimensions(mm)			Weight	LV terminal	
(kVA)	(%)	50%	100%	(%)	(%)	W	D	H	(KG)	T * W	Type
200	6.5	98.30	97.8	3.0	2.0	1230	770	1410	950	8t*40	A
300	7.0	98.50	98.0	2.0	1.9	1230	770	1410	1050	8t*40	A
400	6.5	98.60	98.2	1.5	1.8	1285	780	1435	1200	8t*40	A
500	6.0	98.80	98.3	1.5	1.5	1395	840	1490	1500	8t*60	B
600	6.5	98.80	98.4	1.5	1.5	1450	850	1495	1700	10t*100	D
750	7.0	98.90	98.5	1.5	1.4	1545	865	1595	2000	10t*100	D
900	5.5	99.00	98.6	1.3	1.3	1545	865	1640	2300	10t*100	D
1000	6.5	99.00	98.6	1.3	1.3	1635	940	1720	2500	12t*125	E
1100	6.5	99.00	98.7	1.3	1.3	1635	940	1720	2600	12t*125	E
1250	6.0	99.00	98.8	1.2	1.2	1725	960	1760	3100	12t*125	E
1500	7.0	99.10	98.8	1.1	1.2	1800	1005	1900	3500	15t*150	G
2000	7.5	99.10	98.8	1.1	1.2	1960	960	1960	4300	15t*150	G

* The above excess capacity and unwritten SPEC. can also be manufactured by order.